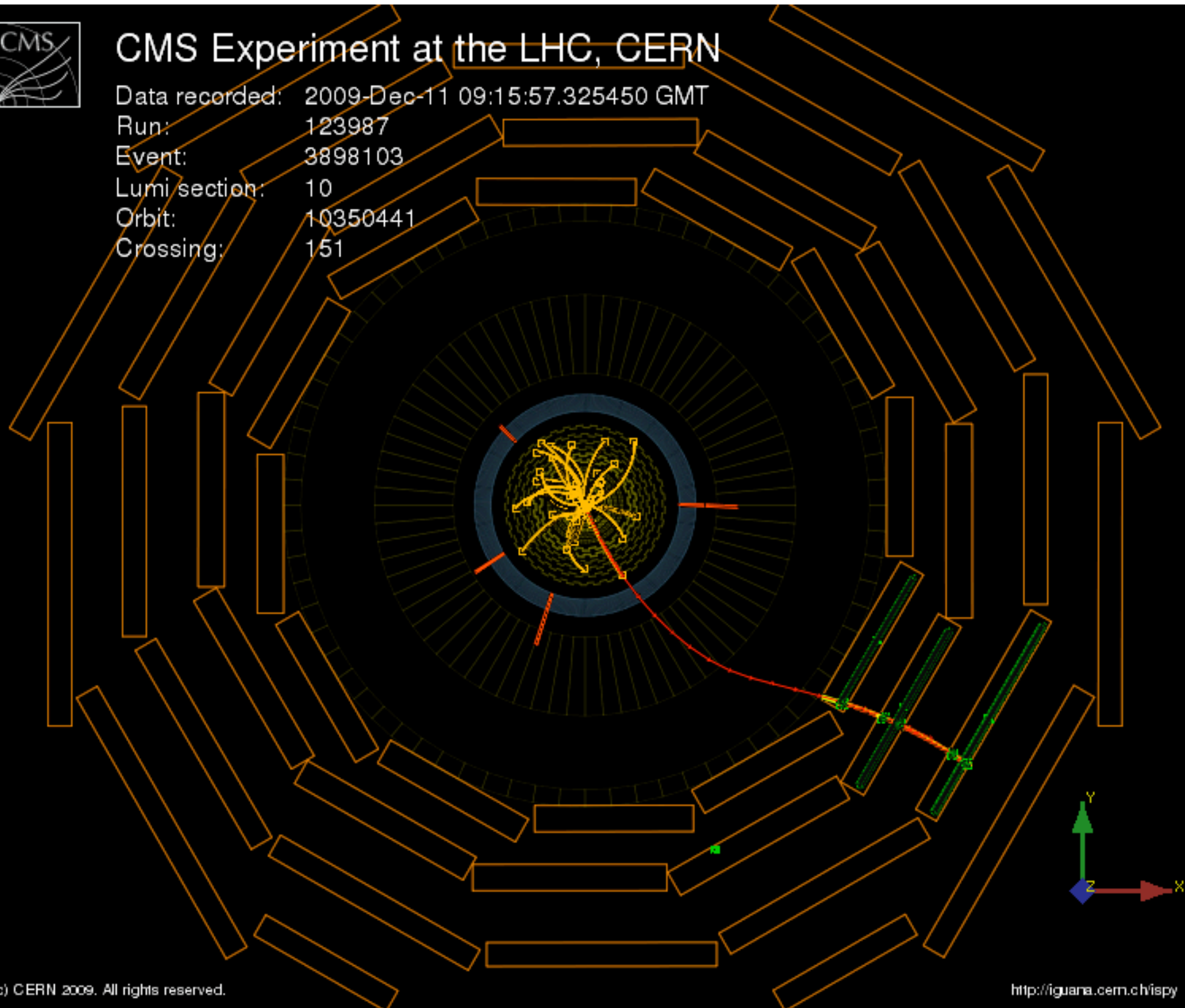




# CMS Experiment at the LHC, CERN

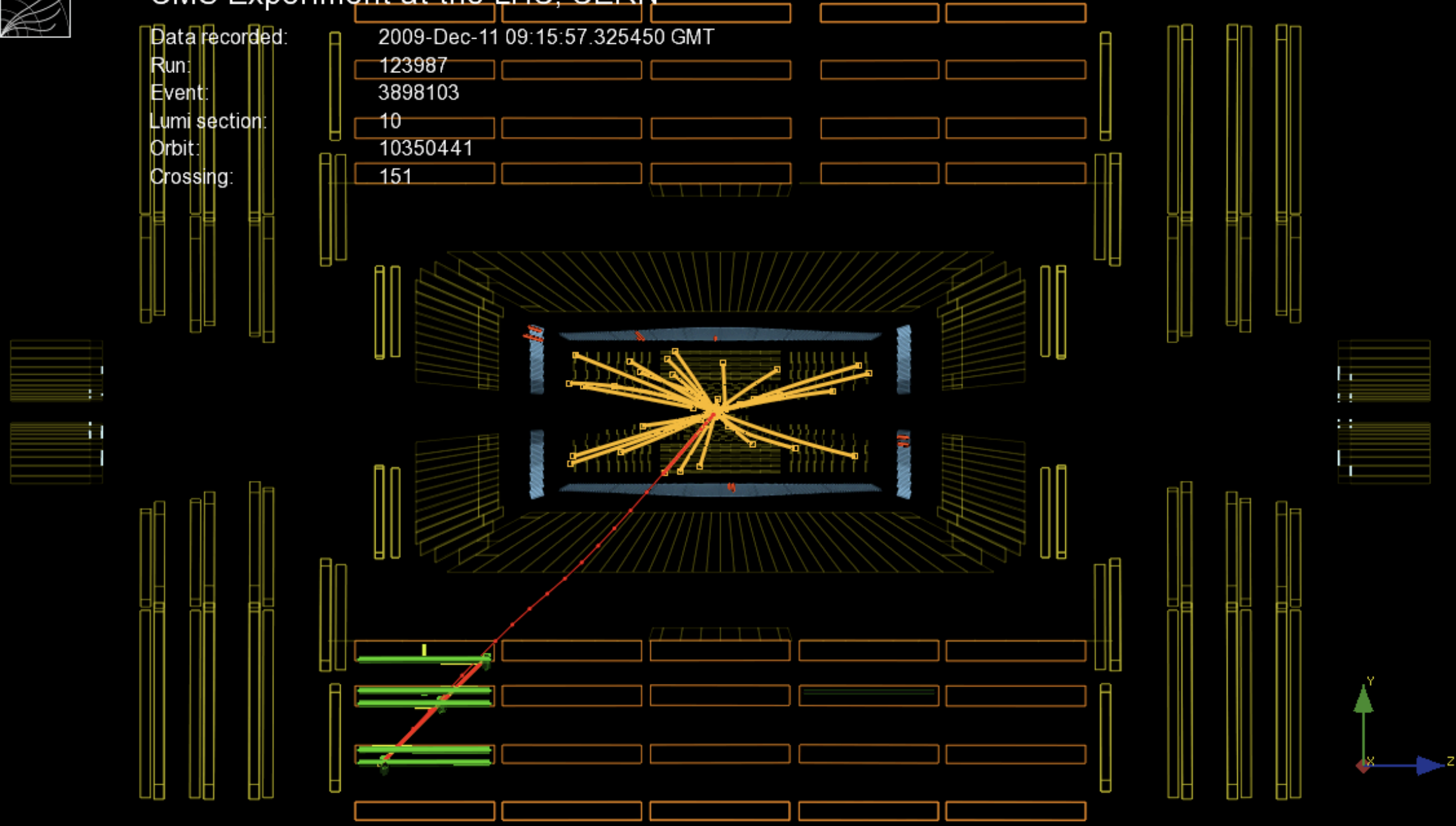
Data recorded: 2009-Dec-11 09:15:57.325450 GMT  
Run: 123987  
Event: 3898103  
Lumi section: 10  
Orbit: 10350441  
Crossing: 151





# CMS Experiment at the LHC, CERN

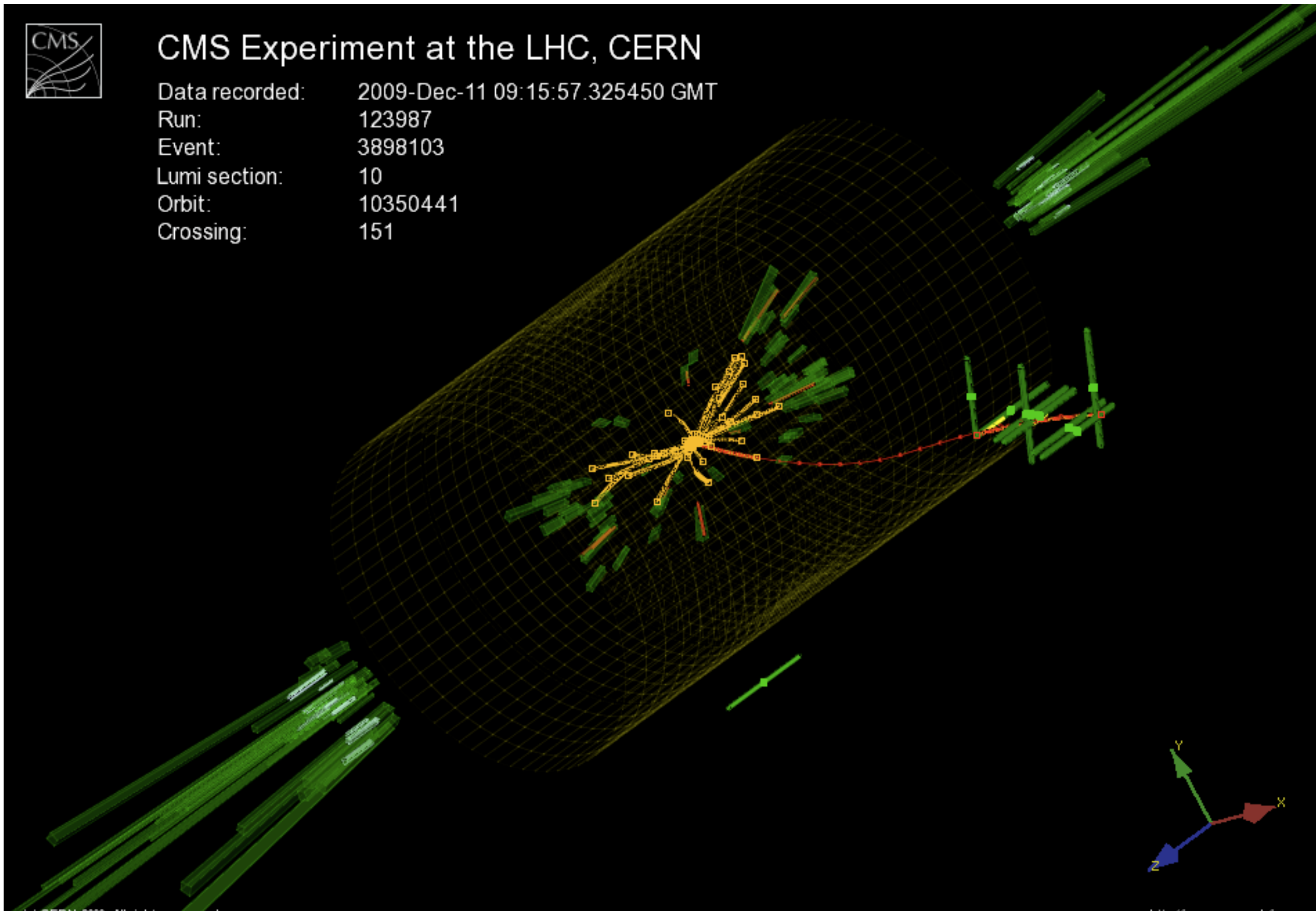
Data recorded: 2009-Dec-11 09:15:57.325450 GMT  
Run: 123987  
Event: 3898103  
Lumi section: 10  
Orbit: 10350441  
Crossing: 151





# CMS Experiment at the LHC, CERN

Data recorded: 2009-Dec-11 09:15:57.325450 GMT  
Run: 123987  
Event: 3898103  
Lumi section: 10  
Orbit: 10350441  
Crossing: 151

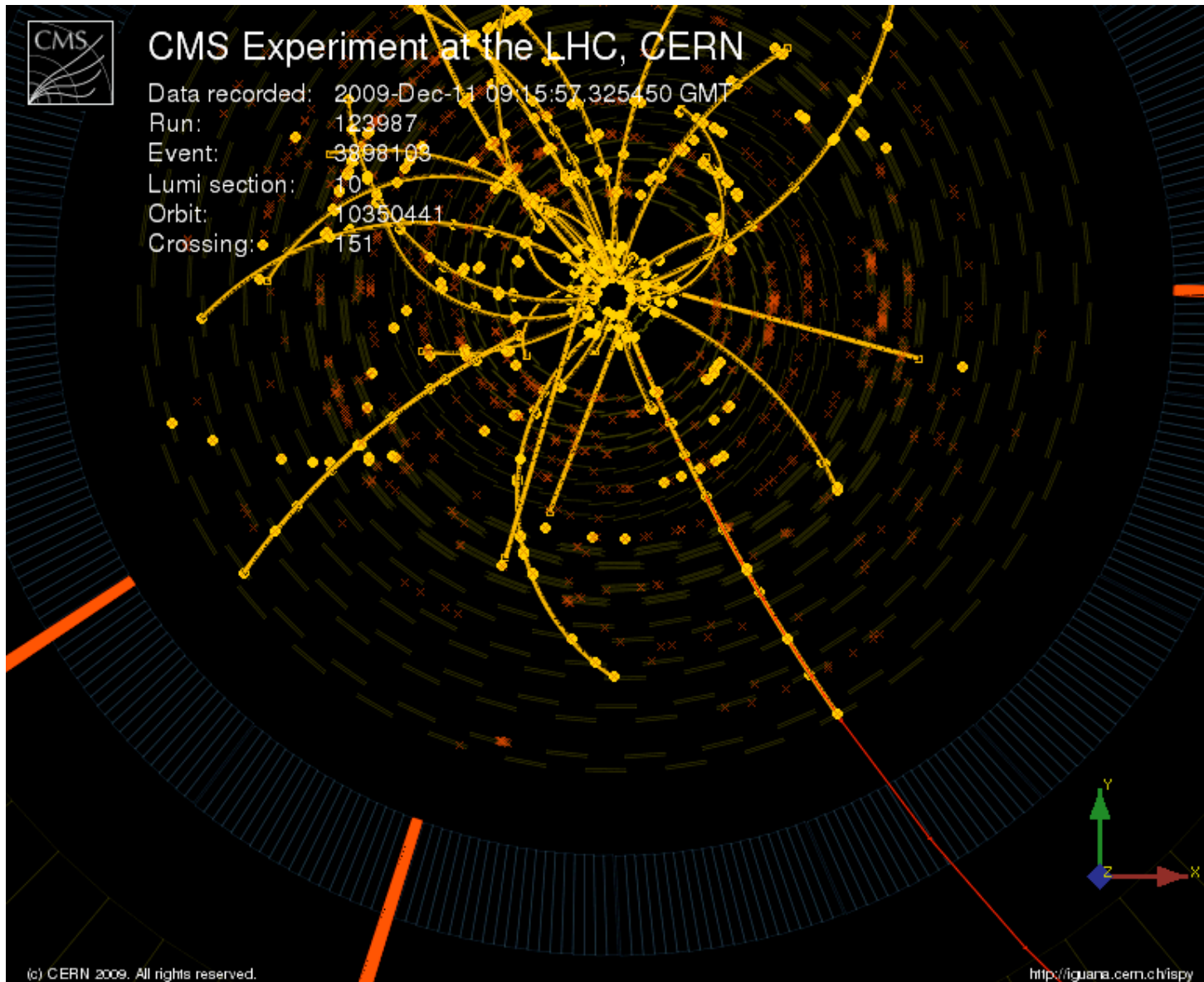






# CMS Experiment at the LHC, CERN

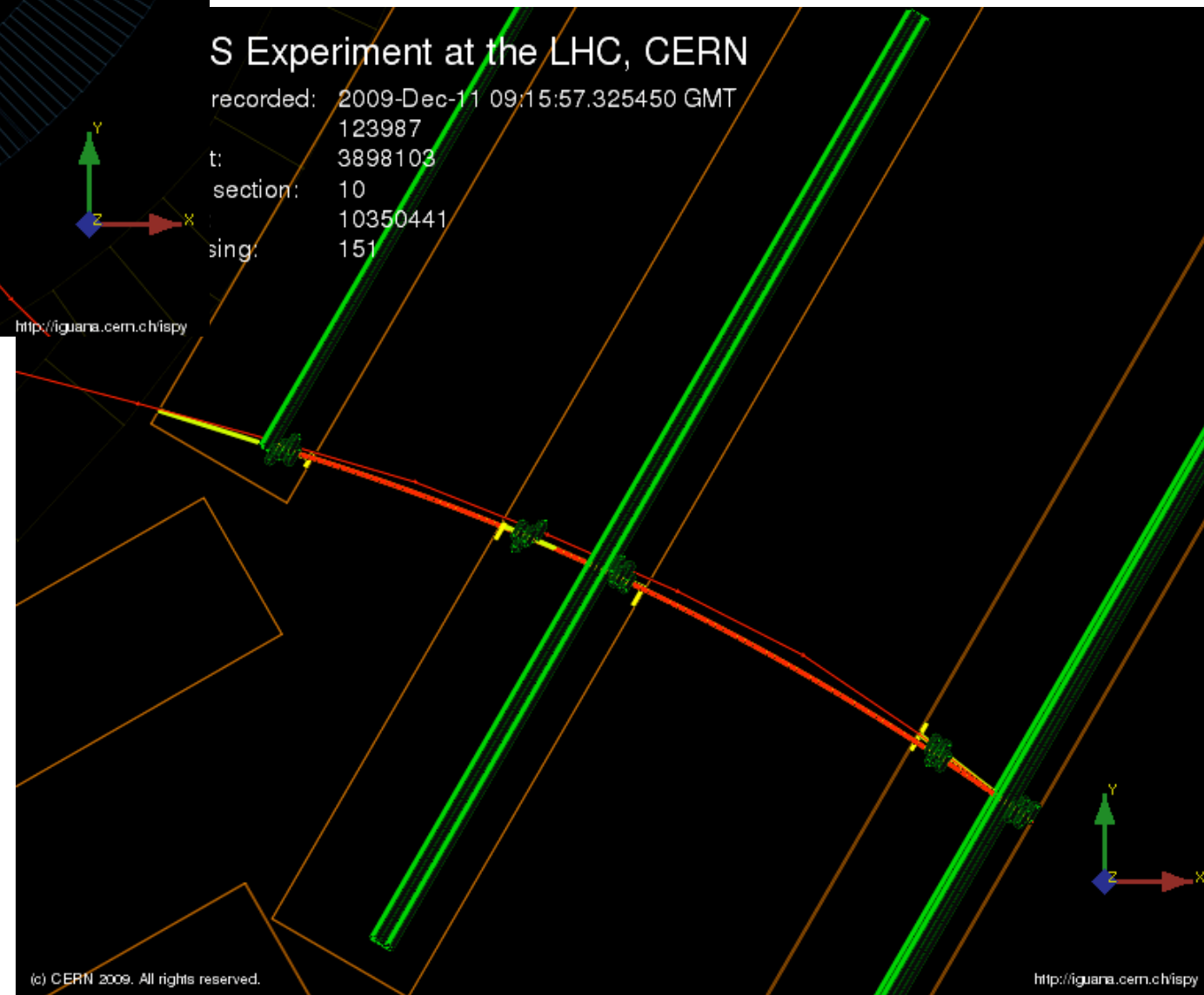
Data recorded: 2009-Dec-11 09:15:57.325450 GMT  
Run: 123987  
Event: 3898103  
Lumi section: 10  
Orbit: 10350441  
Crossing: 151



(c) CERN 2009. All rights reserved.

# S Experiment at the LHC, CERN

recorded: 2009-Dec-11 09:15:57.325450 GMT  
t: 123987  
section: 3898103  
sing: 10350441  
sing: 151



<http://figuana.cern.ch/ispy>

(c) CERN 2009. All rights reserved.

<http://figuana.cern.ch/ispy>



# CMS Experiment at the LHC, CERN

Data recorded: 2009-Dec-11 09:15:57.325450 GMT  
Run: 123987  
Event: 3898103  
Lumi section: 10  
Orbit: 10350441  
Crossing: 151

## Tech Triggers:

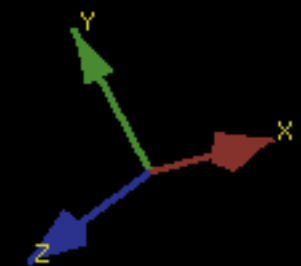
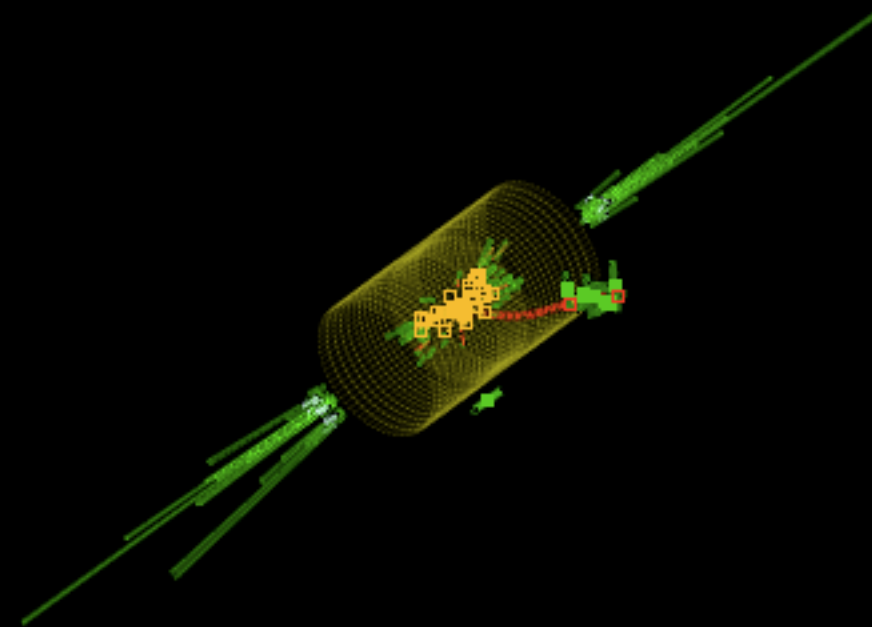
-----  
0  
8  
9  
10  
24  
30  
32  
33  
34  
40  
41  
42  
43

## L1 Triggers:

-----  
L1\_BptxMinus  
L1\_BptxPlus  
L1\_BptxPlusORMinus  
L1\_BscMinBiasInnerThreshold1  
L1\_BscMinBiasInnerThreshold2  
L1\_BscMinBiasOR  
L1\_BscMinBiasOR\_BptxPlusORMinus  
L1\_SingleMuOpen  
L1\_ZeroBias\_Ext

## HLT Triggers:

-----  
HLT\_Activity\_L1A  
HLT\_Activity\_PixelClusters  
HLT\_Activity\_DT  
HLT\_L1MuOpen  
HLT\_MinBiasBSC  
HLT\_MinBiasBSC\_NoBPTX  
HLT\_MinBiasBSC\_OR  
HLT\_MinBiasPixel\_SingleTrack  
HLT\_MinBiasPixel\_DoubleTrack  
HLT\_SplashBSC  
HLT\_L1\_BscMinBiasOR\_BptxPlusORMinus  
HLT\_L1\_BscMinBiasOR\_BptxPlusORMinus\_NoBPTX  
HLT\_RPCBarrelCosmics  
AlCa\_EcalPhiSym  
HLT\_L1\_HFtech  
HLT\_L1Tech\_HCAL\_HF\_coincidence\_PM  
HLT\_HFThreshold3  
HLT\_HFThreshold10  
HLT\_PhysicsDeclared



# Run 123987 Event 3898103

Run 123987 Lumi 10 Orbit 10350441 Event 3898103 Bx 151

MinBiasBSC 1 BPTX 1

## === DT Local Trigger

Station 2 Sector 12 Wheel -2 BX 0

Qual 6 Angle -378 Bending 106 X 11 Y 2

Station 3 Sector 12 Wheel -2 BX 1

Qual 6 Angle -299 Bending 0 X 11 Y 3

## === GMT DTF/PCB

RPCPAC Phi 5.67232 around wedge 12 Eta -0.88 Pt 5 Ch -1 qual 1 at BX 0

RPCPAC Phi 5.67232 around wedge 12 Eta -0.88 Pt 5 Ch -1 qual 1 at BX 1

RPCPAC Phi 5.67232 around wedge 12 Eta -0.88 Pt 5 Ch -1 qual 1 at BX 2

## === DT Local Reco

Ch: Wh:-2 St:1 Se:12 has 1 4D segments

--- DT seg. dim.: 2 phi: 0 -> 0

theta: 2.91957 -> 2.91957 chi2/ndof: 1.93841

Phi proj. # hits: 4 t0: 7.94415 vdrift: 0

Ch: Wh:-2 St:2 Se:12 has 1 4D segments

--- DT seg. dim.: 4 phi: 1.46142 -> 1.46142

theta: 2.34938 -> 2.34938 chi2/ndof: 0.307493

Phi proj. # hits: 8 t0: 0.323539 vdrift: 0

Theta proj. # hits: 4 t0: -3.67745 vdrift: 0

Ch: Wh:-2 St:3 Se:12 has 1 4D segments

--- DT seg. dim.: 4 phi: 1.71529 -> 1.71529

theta: 2.39122 -> 2.39122 chi2/ndof: 2.86808

Phi proj. # hits: 8 t0: 10.1798 vdrift: 0

Theta proj. # hits: 5 t0: -19.2043 vdrift: 0

Phi proj. # hits: 8 t0: 10.1798 vdrift: 0

Theta proj. # hits: 5 t0: -19.2043 vdrift: 0

## === Muon Reco

- eta: -0.769796 phi: -1.20386 pt: 4.08732

-- Energy deposits:

EB energy: 0.340526

EB (3x3) energy: 0.340526

HB energy: 0

HB (3x3) energy: 0

HO energy: 0

HO (3x3) energy: 0

-- TSOS position

x: 0.163405 y: 0.154389 z: -8.46535 dr: 0.224805

Track parameters:

Charge: -1 chi2: 0.893521

d0: -0.207915 +/- 0.0167078

dxy: 0.207915 +/- 0.0167078

dz: -8.53786 +/- 0.0233317

# of valid hits: 50 # of hits: 50

# of hits in track:50

# of hits in DT:29

# of hits in CSC:0

# of hits in RPC:4

# of hits in Tk:17

# of hits in PixB:3

# of hits in PixE:0

# of hits in TIB:6

# of hits in TID:0

# of hits in TOB:8

# of hits in TEC:0

**STA not updated @ vertex:**

Charge: -1 chi2: 1.3345

d0: 35.6673 +/- 24.9977

dxy: -35.6673 +/- 24.9977

dz: 31.4274 +/- 36.5659