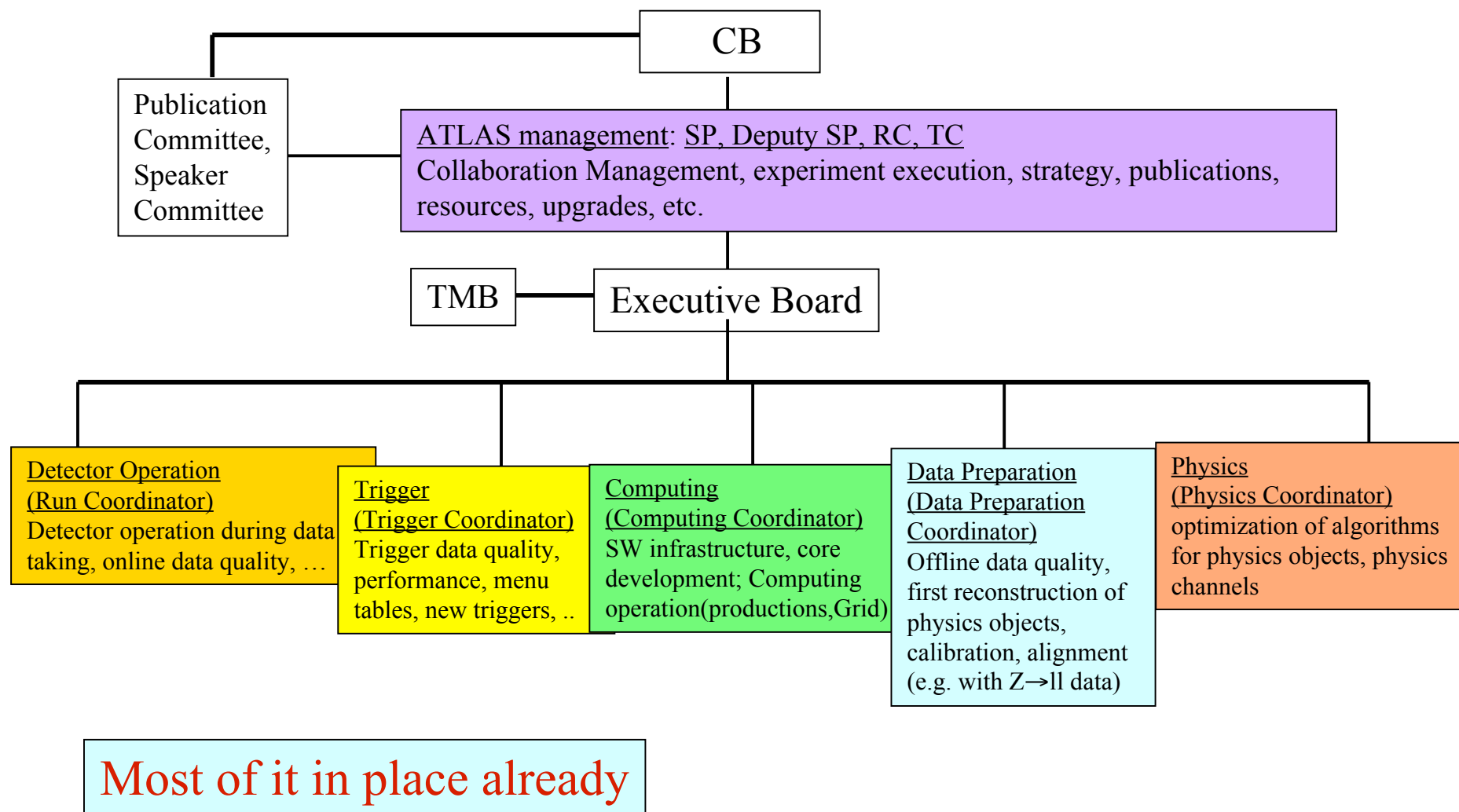


ATLAS Operation Model for data taking phase



The Analysis Reviewers (ARe)



To be modified/improved/adapted

Proposed composition :

- ~ 2-3 ARe per analysis or per "group of analyses" (e.g. if two different analyses on the same topic, see below), appointed by Physics Coordinator
- should come from Collaboration at large, i.e. can be involved in ANY of the 5 areas of the Operation Model, and most of them should not be directly involved in the physics group in question, in order to bring complementary scrutiny
- one of the ARe should be a senior physicist, one should become member of the Editorial Board for the final paper
- estimated to be 30% time job

Tasks :

- monitor an analysis from "early" stages interacting actively with the authors
- bring a fresh and objective viewpoint from outside relevant physics group
- inject wisdom and constructive criticism
- help to resolve different approaches to the same analysis topic
- play a role in the preparation of the note and first draft paper making sure it is coherent and understandable by everybody

Additional burden on the Collaboration but also additional benefits :

- ARe oversight mechanism will play significant role especially at the beginning when analysis scrutiny by many people from different perspectives will be essential
- since ARe selected from the Collaboration at large, this scheme increases involvement of Collaboration in (and brings more and more people closer to) physics studies